



ESTD 1906

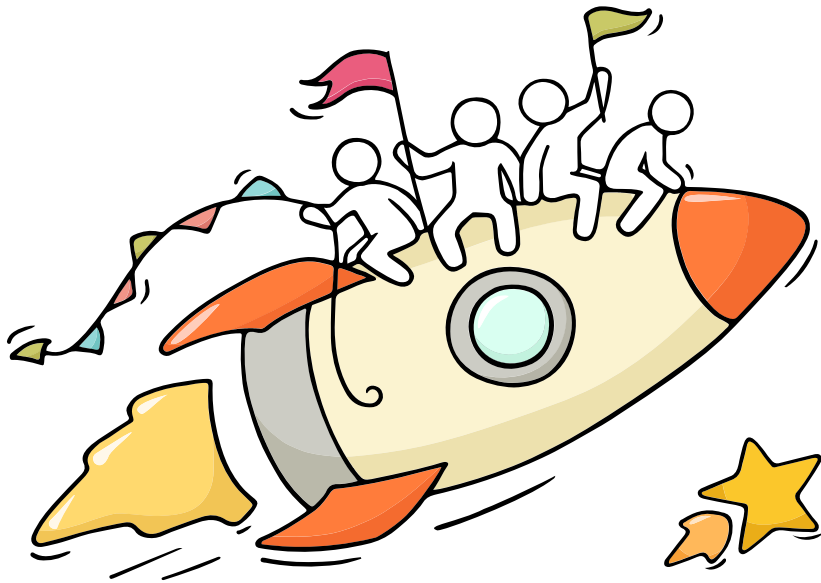
# Outram Secondary School

## **Joint Intake Exercise**

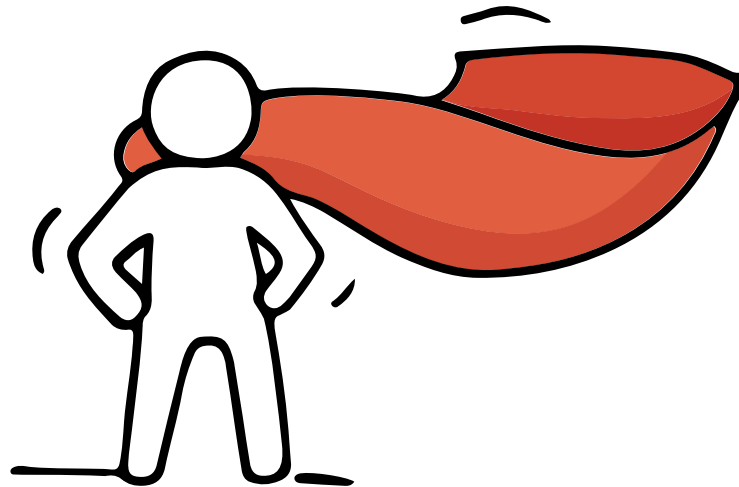
**Administrative Briefing [School Website]**

# Dear students,

You have worked hard to reach this stage. Let's celebrate your efforts!



Remember that while **everyone's educational journey is different, we can each have a fulfilling outcome!**



# Thinking about Your Next Step?

Consider these questions!

Where do I want to go?

Who am I?



How Do  
I Get There?

# Resources to help you make informed decisions



## MySkillsFuture Student Portal

A one-stop portal that empowers you to embark on a journey of self-discovery and make informed education and career choices.

Use the information and tools to explore various education and career pathways and take charge of your future.

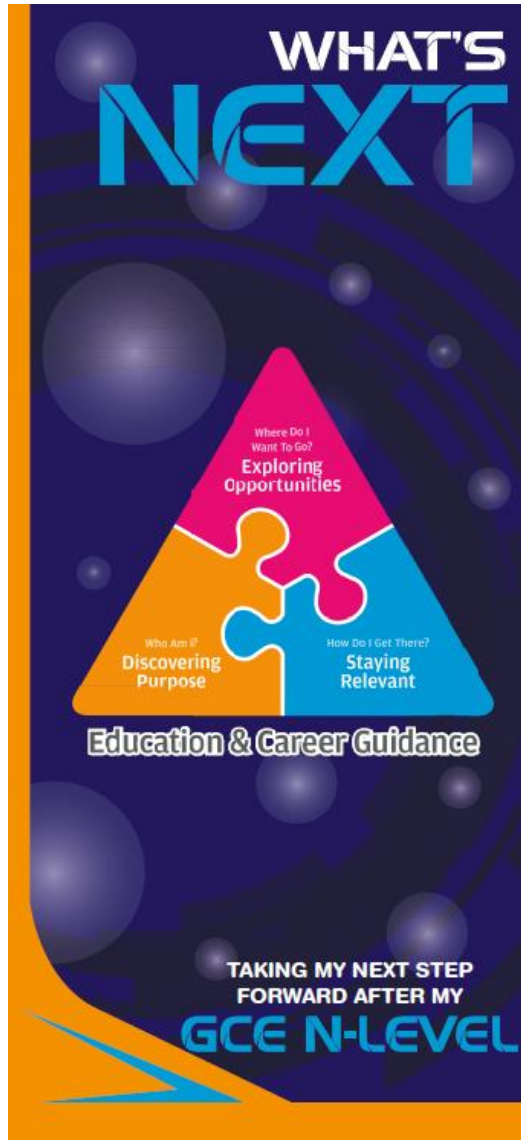
*Where can we find more information?*



<https://go.gov.sg/mySFsec>



# Resources to help you make informed decisions



<https://go.gov.sg/whats-next-nlevel>

<https://go.gov.sg/whats-next-nlevel>

# Resources to help you make informed decisions

## Post-Secondary Education

Learn more about the admission exercises and programmes



<https://moe.gov.sg/post-secondary/admissions>

Learn more about the post-secondary education institutions



<https://moe.gov.sg/post-secondary/overview>

# Resources to help you make informed decisions

Explore different jobs and industries with On My Way (OMW). Find out if your career goal and educational pathway match your interests, values and ambitions. <https://www.nyc.gov.sg/omw/home>



## KNOW IT ALL

provides consolidated information about different jobs and industries - key responsibilities, skills, career paths and more!



## A Day in the Life of a Food Technologist

## DAY IN THE LIFE

takes you into the lives of different professionals and give you a glimpse of their jobs and what it entails through the medium of videos.



## TASTER PROGRAMMES

are micro-experiences of different job roles that allow you to get a taste of working life and help you decide what to study to achieve your career aspirations!





# Concerned about your next steps?

## Stop

- Calm yourself down. Take a few deep breaths.

## Think

- Think through the different options that are available for you. Keep things in perspective.
- Remember that the N-Level is one part of your life journey and not the destination.

## Do

- Approach a trusted adult and seek his/her help. Have a conversation with this person about what would be best for you.
- Make a decision and take action based on your options.

**When you receive your results, you may experience a range of emotions.**

**Managing these emotions well will allow you to stay calm and make rational decisions.**

# Reaching out for help is a sign of strength, not weakness.

If you have any questions about your options or are not coping well, do reach out to someone you trust and speak with them. It could be a parent/guardian, teacher, ECG Counsellor, School Counsellor or a friend that you can talk to.



# Support is readily available for you.

**Reach out to an ECG Counsellor!**

*Who can we go  
to for ECG  
advice?*

Make an appointment to speak  
with your ECG Counsellor in school.

**OR**

Make an ECG counselling  
appointment via the  
ECG Centre @ MOE (Grange Road)  
at

<https://go.gov.sg/moe-ecg-centre>



# Keep a lookout for some of these signs in your peers or in yourself

*How can we support one another?*



**D**

Deliberately avoiding others

**I**

Increased irritability, restlessness, agitation, stress and anxiety

**S**

Sending or posting moody messages on social media

**T**

Talking about death or dying

**R**

Reacting differently or gradually losing interest in things they used to like

**E**

Eating more than usual or having a much reduced appetite

**S**

Sleep pattern changes with difficulty falling asleep or oversleeping

**S**

Slowing down of energy levels

If you notice any of these signs in yourself or your friends,  
**have a chat with your school counsellor or teacher**  
Or contact SOS 24-hour hotline at **1-767** or **1800-221-4444**

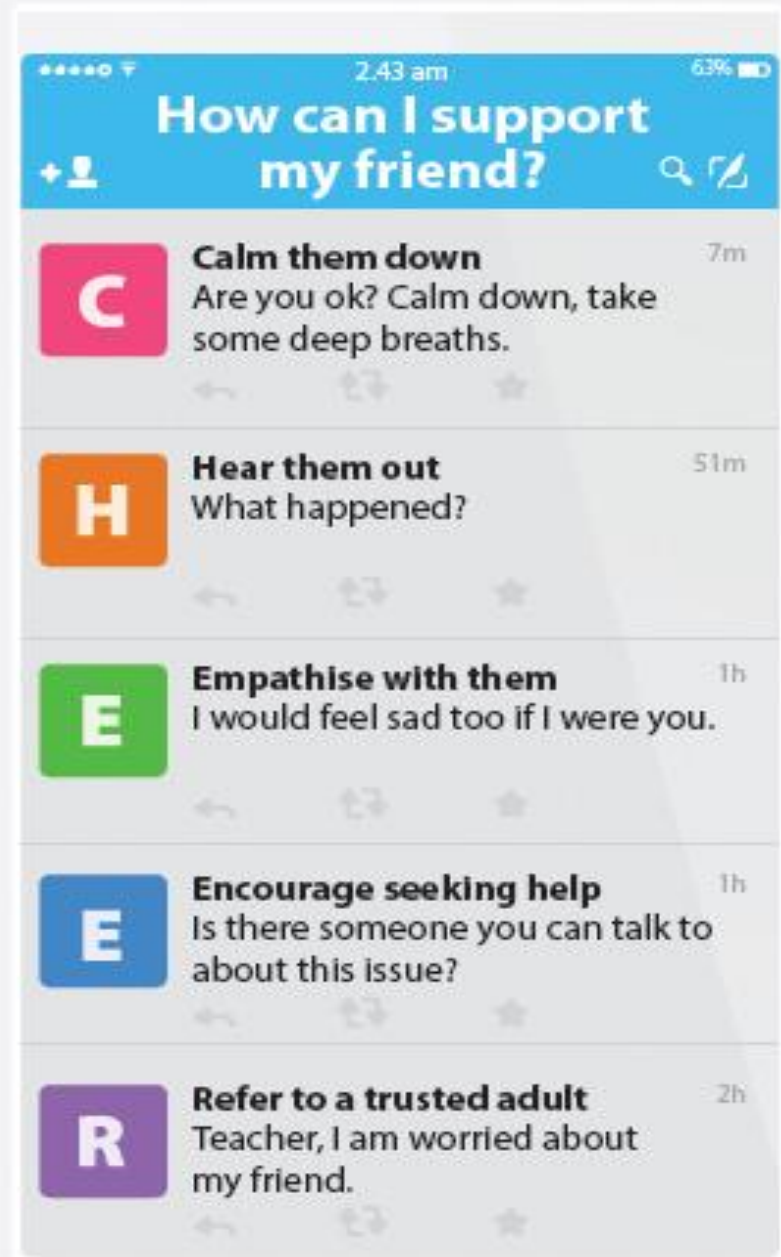


# Supporting Your Friend

We may each experience different emotions upon receiving the results. You can share your friends' joy by congratulating them or give words of encouragement to friends who may be disappointed with their results.



Keep a lookout for your friends in distress. You can support them in the following ways:



# Support is readily available for you.

There are other hotlines and chats available if you are more comfortable seeking help using these platforms. Scan the QR code below for a helpful resource.



**SOS** provides round-the-clock emotional support for those in distress, thinking of suicide or affected by suicide.

Call: **1767**  
**(24-hour helpline)**

Whatsapp: **9151 1767**  
**(24-hour Care Text)**

## Community Health Assessment Team

**(CHAT)** provides personalised and confidential mental health checks and consultation for youths. To speak with a youth support worker, you can:

Visit: **CHAT Hub at \*SCAPE, #05-05**

Call: **6493 6500/ 6501**

Email: **CHAT@mentalhealth.sg**

**mindline.sg** is an online platform that provides tools, tips and resources to help you manage your health and well-being. Find out more at:

**[www.mindline.sg](http://www.mindline.sg)**



**TOUCHline** is a helpline to provide youths with emotional support and practical advice.

Call: **1800-377 2252**

*Monday- Friday (Excluding Public Holidays):  
9am – 6pm*

**Carey** is an online platform by Care Corner that provides free mental health check-ins with mental health professionals. Find out more at:  
**<https://carey.carecorner.org.sg/>**

**eC2** is an e-Counselling Centre where you can talk to a trained counsellor about the issues you are facing, right where you are.

Chat with a counsellor at:

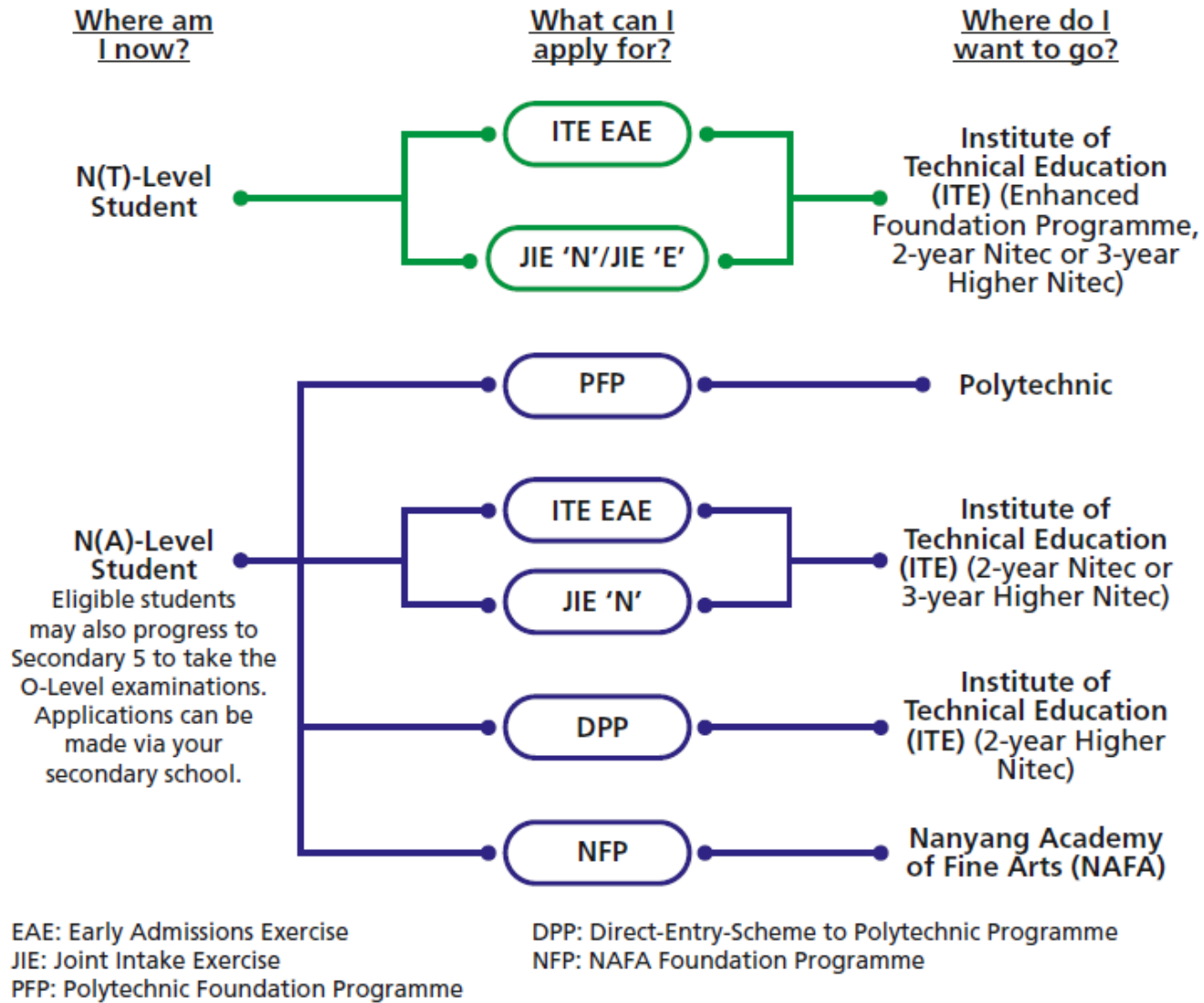
**[www.ec2.sg](http://www.ec2.sg)**

*Monday – Friday (Excluding Public Holidays):  
10am – 12pm & 2pm – 5pm*



**The N-Level  
examination is not  
the destination.**

**It is part of your  
education journey.**



<https://www.moe.gov.sg/post-secondary/admissions>

For more information on applying to these courses, you can visit

<https://ite.edu.sg/admissions/traineeship>

For the list of 3-year Higher Nitec courses, please visit

<https://www.ite.edu.sg/courses/full-time-courses/nitec-and-3-year-higher-nitec>

Selected Nitec and Higher Nitec courses are available in traineeship mode.



# **Important documents to receive:**

- 1. GCE 'N' Level Result Slip**
- 2. GCE 'N' Level Certificate**
- 3. Form N**

# Progression Pathways

|             |  |  |
|-------------|--|--|
| NFP         | NAFA Foundation Programme                        | <p>Normal (Academic) ONLY</p> <p>Aggregate Type:<br/><b>ELMAB3</b></p> |
| Sec 5       | Progression to O-level via Secondary 5           |  |
| PFP         | Polytechnic Foundation Programme                 |  |
| DPP         | <i>Higher Nitec via DPP</i>                      |  |
| JIE'N'      | 2-year <i>Nitec</i> & 3-year <i>Higher Nitec</i> | <p>Normal (Academic)<br/>&amp;<br/>Normal (Technical)</p>              |
| Traineeship | Traineeship Scheme                               |  |


# Online Application (looks like this)


2-Year Nitec and 3-Year  
Higher Nitec Courses

3-Year Nitec Course with eNFP  
(for courses with 0, 1 pass)

1. Go to <https://www.ite.edu.sg>.

2. Click  icon.

3. Under JIE 'N', click  icon to link to the application website

Under JIE 'E', click  icon to link to the application website

4. For DPP, choose JIE 'H'.

5. At the application website:

- a) Enter NRIC / FIN and Date of Birth to start application. You may also apply using SingPass.
- b) Upon completion of application, applicants will receive their **web ID** and password.



# Online Application (looks like this)

ite.edu.sg/apply-for-ITE-courses

## Intake Exercises for ITE Courses

[Check Application Result \(Full-Time Courses\)](#)

| Full-Time 2-Year <i>Higher Nitec</i> Courses (Apr 2023 Intake)  | Part-Time Intake Exercises   |
|---|--|
| <p>For GCE 'O' Applicants (JAE) <a href="#">Apply Now</a></p>   | <p>Nitec and ITE Skills Certificate (ISC) Courses <a href="#">Apply Now</a></p>              |
| <p>For Nitec Progression to <i>Higher Nitec</i> (NCHN) <a href="#">Apply Now</a></p>                            | <p><i>Higher Nitec</i> Courses <a href="#">Apply Now</a></p>                                 |
| <p>Full-Time 2-Year <i>Higher Nitec</i> Courses (Jan 2023 Intake)</p>   | <p>Joint Industry (JIND) Courses <a href="#">Apply Now</a></p>                               |
| <p>Direct Entry Scheme to Polytechnic Programme (DPP) (JIE 'H') <a href="#">Apply Now</a></p>                   | <p>Short Courses <a href="#">Apply Now</a></p>   |
| <p>Full-Time 3-Year <i>Higher Nitec</i> / 2-Year <i>Nitec</i> Courses (Jan 2023 Intake)</p>                     | <p>SkillsFuture Series Certificate of Competency (COC) Courses <a href="#">Apply Now</a></p> |
| <p>For GCE 'N' Applicants (JIE 'N') <a href="#">Apply Now</a></p>   | <p>Train the Trainer (TTT) Courses <a href="#">Apply Now</a></p>                             |
| <p>For GCE 'O' Applicants (JIE 'O') <a href="#">Apply Now</a></p>   | <p>Structured OJT Workshops <a href="#">Apply Now</a></p>                                    |
| <p>For ISC Progression to 3-Year <i>Higher Nitec</i> / 2-Year <i>Nitec</i> (ISCJ) <a href="#">Apply Now</a></p> | <p>Workforce Skills Qualification (WSQ) Courses <a href="#">Apply Now</a></p>                |



<https://www.ite.edu.sg/apply-for-ITE-courses>

# Strategy to maximise your 12 JIE choices

**Tip: Use the previous year's aggregate as a guide.**

## Passion

- 1<sup>st</sup> 4 choices
- Choose courses you are **most interested** in, even if

*net score > JIE score*

e.g. 14 > 11

## Practical

- Next 4 Choices
- Choose courses that are **related** / you have some interest in, with

*net score ≈ JIE score*

e.g. 14 ≈ 13 – 15

## Prudent

- Last 4 Choices
- To assure a place, choose courses you don't mind, with

*net score < JIE score*

e.g. 14 < 19

# Use ALL 12 choices

“

*If you don't choose a course you want,  
a course you don't want will choose you.*



Do NOT leave any blank

# Recap: choices in Mock JIE Worksheet

## 2023 JOINT INTAKE EXERCISE WORKSHEET

This JIE worksheet is provided to assist you before you do your online course registration.

### (A) Personal Particulars

Please fill in your personal particulars and update them as necessary in the online system.

NRIC/FIN : \_\_\_\_\_  
Name : \_\_\_\_\_  
Mobile Number\* : \_\_\_\_\_  
Contact Number : \_\_\_\_\_  
Email Address^ : \_\_\_\_\_

\* Your posting result will be sent via SMS to a valid Singapore mobile number.

^ Your JIE verification slip, which captures you submitted course preferences, will be sent to this email address.

### (B) Course Preference

You are only allowed to specify courses that you are eligible for, up to a maximum of 12 courses.

You are strongly advised to make full use of the 12 choices, from all the possible options below:

1. Direct-Entry-Scheme to Polytechnic Programme (DPP)
2. Higher Nitec (3-year course)
3. Nitec (2-year course)
4. Traineeship programme.

Please refer to your Form N and Information Booklet for course eligibility details.

| Choice Order    | Course Code | Aggregate Range | Choice Order     | Course Code | Aggregate Range |
|-----------------|-------------|-----------------|------------------|-------------|-----------------|
| 1 <sup>st</sup> |             |                 | 7 <sup>th</sup>  |             |                 |
| 2 <sup>nd</sup> |             |                 | 8 <sup>th</sup>  |             |                 |
| 3 <sup>rd</sup> |             |                 | 9 <sup>th</sup>  |             |                 |
| 4 <sup>th</sup> |             |                 | 10 <sup>th</sup> |             |                 |
| 5 <sup>th</sup> |             |                 | 11 <sup>th</sup> |             |                 |
| 6 <sup>th</sup> |             |                 | 12 <sup>th</sup> |             |                 |

✓ **12 Options**  
✓ **Do NOT**  
**apply for only**  
**one option.**

# Recap: Use CourseFinder

## CourseFinder

*Explore courses based on aggregate type, score, type of institute and area of interest.*



Select the institutions you want to explore:

**INSTITUTE OF TECHNICAL  
EDUCATION**

**JUNIOR COLLEGES AND  
MILLENNIA INSTITUTE**

**POLYTECHNICS**

**UNIVERSITIES**



<https://www.moe.gov.sg/coursefinder>



# Use filters to sort

The image shows a user interface for selecting and viewing courses. On the left, there are three filter panels, each highlighted with a red rounded rectangle:

- Criteria:** Includes a 'Clear all' link. The 'Colleges' section has three options:  ITE College Central,  ITE College East, and  ITE College West.
- Aggregate:** Includes a 'Clear' link. The 'Aggregate type' section has a dropdown menu with the text 'Select an aggregate type'. The 'Aggregate score' section has a text input field containing the number '6'.
- Field of study:** Has two options:  Business and Services and  Electronics and Info-comm Technology.

On the right, the main content area is titled 'Courses in ITE' and shows 'Showing 62 courses'. It features two active filters: 'ITE College West' and 'ITE College Central'. Below the filters, two course cards are visible:

- AI Applications:** Offered by ITE College Central and ITE College West. Qualification Required: GCE O-Level. Course duration: 2 years.
- AI Applications (3 years):** Offered by ITE College Central and ITE College West. Qualification Required: GCE N-Level. Course duration: 3 years.

Each course card includes a heart icon for favoriting. At the top right of the main content area, there is a pagination control showing '1 of 4' with left and right navigation arrows.

# Checking of Posting Results / Accept Course Offer

1. Go to <https://istudent.ite.edu.sg>.

2. Enter **web ID** and password.

3. Click '**Self-Service**' followed by '**Student Admission**' followed by '**View Application Results**' to view the application results and to accept course offer.

[https://www.ite.edu.sg/docs/default-source/full-time-intake-pages-content/full-time-intake-exercises/jien/jien-2024-intake-application-schedule.pdf?sfvrsn=bf095bad\\_2](https://www.ite.edu.sg/docs/default-source/full-time-intake-pages-content/full-time-intake-exercises/jien/jien-2024-intake-application-schedule.pdf?sfvrsn=bf095bad_2)

# Key Dates for Jan 2024 Intake Exercise

| Key Activity  | Period for 2-Year Nitec Courses and 3-Year Higher Nitec courses   | Remarks   |
|---|---|---|
| <b>1st Phase (Main Application Period)</b>              |   |   |
| Application   | <b>18 Dec 2023 (2.30pm) to 21 Dec 2023 (5pm)</b>  | Apply through the Internet at <a href="https://www.ite.edu.sg">https://www.ite.edu.sg</a> with NRIC / FIN and Date of Birth. You may also apply using SingPass.           |
| Release of Results                                      | <b>29 Dec 2023 at 9am</b>   | Check results at <a href="https://istudent.ite.edu.sg">https://istudent.ite.edu.sg</a> with web ID and password   |
| Acceptance of Course Offer Period                       | <b>29 Dec 2023 to 3 Jan 2024</b>  | Accept course offer at <a href="https://istudent.ite.edu.sg">https://istudent.ite.edu.sg</a> with web ID and password   |
| <b>2nd Phase (Appeal &amp; Late Application Period)</b> |   |   |
| Application   | 29 Dec 2023 to 3 Jan 2024   | Apply through the Internet at <a href="https://istudent.ite.edu.sg">https://istudent.ite.edu.sg</a> with NRIC / FIN and Date of Birth. You may also apply using SingPass. |
| Release of Results                                      | 5 Jan 2024 from 9am   | Check results at <a href="https://istudent.ite.edu.sg">https://istudent.ite.edu.sg</a> with web ID and password   |
| Acceptance of Course Offer Period                       | 10 to 12 Jan 2024   | Accept course offer at <a href="https://istudent.ite.edu.sg">https://istudent.ite.edu.sg</a> with web ID and password   |
| <b>3rd Phase (Final Application Period)</b>             |   |   |
| Application   | 1 <sup>st</sup> Sub-Phase Application - 10 to 18 Jan 2024<br>2 <sup>nd</sup> Sub-Phase Application - 24 Jan to 7 Feb 2024 | Apply through the Internet at <a href="https://istudent.ite.edu.sg">https://istudent.ite.edu.sg</a> with NRIC / FIN and Date of Birth. You may also apply using SingPass. |
| Release of Results                                      | 1 <sup>st</sup> Sub-Phase - 24 Jan 2024<br>2 <sup>nd</sup> Sub-Phase - 14 Feb 2024  | Check results at <a href="https://istudent.ite.edu.sg">https://istudent.ite.edu.sg</a> with web ID and password   |
| Acceptance of Course Offer Period                       | After release of Sub-Phase results  | Accept course offer at <a href="https://istudent.ite.edu.sg">https://istudent.ite.edu.sg</a> with web ID and password   |

Jan 2024 Intake Term Commencement Date: 8 Jan 2024

## **ITE Application Details (JIE 'N'/'E'/'H'):**

- **Application starts today (18 Dec) at 2.30pm and closes on 21 Dec 5pm.**
- **Important dates – Pg 6 of booklet.**

- **Release of Application Results – 29 Dec.**
- Check the results via the ITE application portal.
- Remember to log on to the ITE application portal between 29 Dec 2023 and 3 Jan 2024 to **accept or reject the offer.**

- **Release of Application Results for DPP - 22 Dec.**
- Check the results via the ITE application portal.
- Remember to log on to the ITE application portal between 22 - 27 Dec to **accept or reject the offer**.

## **Application Details (PFP):**

- **Eligible candidates will receive a copy of Form P on the day of O Level Results Release in Jan 2024.**
- Candidates interested in applying for the PFP should first report to their secondary schools in 2024 to start their Secondary 5 year, while awaiting notification of eligibility and confirmation of a place in the PFP.

## Appeal for review of results:

- **Appeal Fee per subject - \$112.35 [PR & IS - \$113.40]**
- **Candidates who do not have a strong ground for submitting an appeal are discouraged from doing so.**
- The closing date for the application for appeal of results and the payment of appeal fees is **22 December 2023.**
- **Outcome of the appeal will be released by 2 Feb 2024.**
- Check with Ms Cheong / Ms Tan.



## **For students who have intentions to repeat:**

- **Please make an appointment to see the Vice- Principal Mrs Toh, by 20 Dec, 12pm.**

## **N LEVEL CERTIFICATE :**

- **Please check your Name for misspelling.**
- **An amendment fee of \$50 for any reprint of certificates.**
- **Please see Ms Cheong / Ms Tan for more details immediately.**

# Other useful info / resources

|   |   |
|---|---|
| ITE Hotline<br>(for ITE admissions and courses)   | 1800 2222 111<br><a href="mailto:training@ite.edu.sg">training@ite.edu.sg</a>   |
| ITE Admission Booklet 2024  | <a href="https://www.ite.edu.sg/docs/default-source/admissions-docs/full-time/publications/admission-booklet/gce-n-admission-booklet-2024.pdf">https://www.ite.edu.sg/docs/default-source/admissions-docs/full-time/publications/admission-booklet/gce-n-admission-booklet-2024.pdf</a> |
| Information on NAFA Foundation Programme  | <a href="https://go.gov.sg/applynafafp">https://go.gov.sg/applynafafp</a>   |
| Information on Progression Opportunities (From Nitec Courses to Higher Nitec and Diploma Courses) | See ITE Course Booklet 2024 (pages 46 and 48)   |
| PFP courses (with ELMAB3 Range)   | <a href="https://pfp.polytechnic.edu.sg/PFP/pfp_courses.html">https://pfp.polytechnic.edu.sg/PFP/pfp_courses.html</a>   |

# DIRECT-ENTRY-SCHEME TO POLYTECHNIC PROGRAMME (DPP)

## 5 Things You Need to Know

### 1. What is the DPP?

- Prepares Sec 4N(A) students for progression into selected polytechnic diploma courses via a 2-year *Higher Nitec* programme at ITE, and a 10-week DPP preparatory course
  - Serves as an alternative to Sec 5
- DPP students who meet the minimum qualifying GPA score are guaranteed a place in a polytechnic diploma course mapped to the *Higher Nitec* course. (Refer to <https://www.ite.edu.sg/admissions/full-time-courses/higher-nitec-dpp> for course mapping.)
- About 1,200 places offered across 18 *Higher Nitec* courses

### 2. Am I eligible for DPP?

- Sec 4N(A) student who has sat for GCE N-Level exams in 2023
- Obtained ELMAB3 aggregate of 19 points or less (before deduction of CCA bonus points)
- Meet course-specific entry requirements
- If you can check all 3 boxes above, you're eligible!**  
(Note: Being eligible to apply does not guarantee you a place in a DPP *Higher Nitec* course.)

If you have offered GCE O-Level examination subjects in 2023, you may refer to this table for the equivalent grade to compute your ELMAB3 aggregate:

| GCE O-Level Grade | Converted Grade |
|-------------------|-----------------|
| A1-B3             | 1               |
| B4-C6             | 2               |
| D7                | 3               |
| E8                | 4               |

### 3. How do I apply?

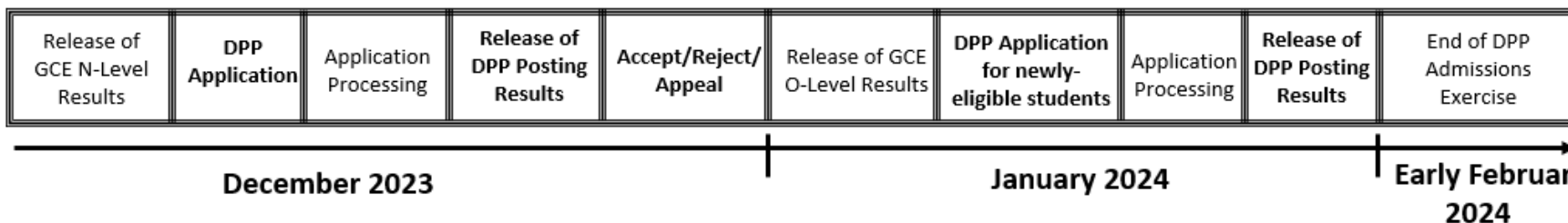
- Upon release of the GCE N-Level results, all DPP-eligible students may apply for DPP *Higher Nitec* courses via the ITE website (<https://www.ite.edu.sg>).
- You may select up to 12 course choices.
- Remember to provide updated contact details in your application so that ITE can contact you if necessary.

### 4. How will I be informed of the outcome?

- You should check your DPP posting results online on the morning of the release of the DPP posting results.
- You will then have to indicate if you wish to accept/reject/appeal the offer.
- Your offer will be void if you do not accept the offer by the stipulated date. You will be required to continue with your classes in Sec 5 or with your *Nitec* course if your application via JIE 'N' is successful

### 5. What happens next?

Upon accepting your DPP offer, you will attend a 10-week DPP preparatory programme starting from Jan 2024.



More information can be found at: <https://www.ite.edu.sg/admissions/full-time-courses/higher-nitec-dpp>

# POLYTECHNIC FOUNDATION PROGRAMME (PFP)

## Essential Things You Need to Know

### 1. What is the PFP?

- A foundation year at the polytechnics that:
  - Prepares well-performing Sec 4N(A) students for entry into relevant polytechnic diploma courses
  - Serves as an alternative to Sec 5
- Conducted over two academic semesters at the polytechnics
- Students must pass all PFP modules in order to progress to their respective, pre-selected diploma courses.

### 2. Am I Eligible for PFP 2024?

You are eligible for the PFP if you:

- Sat for GCE N-Level exams as a school candidate in 2023
- Have obtained an ELMAB3 aggregate of 12 points or less (before deduction of CCA bonus points)
- Met subject-specific entry requirements as listed on the PFP portal

✔ **If you can check all 3 boxes above, you're eligible!**  
(Note: Eligibility does not guarantee you a place in a PFP course)

If you had offered GCE O-Level examination subjects in 2023, you may refer to this table for the equivalent grade to compute your ELMAB3 aggregate:

| GCE 'O' Level Grade | Converted Grade |
|---------------------|-----------------|
| A1-B3               | 1               |
| B4-C6               | 2               |
| D7                  | 3               |
| E8                  | 4               |

### 3. How do I Apply?

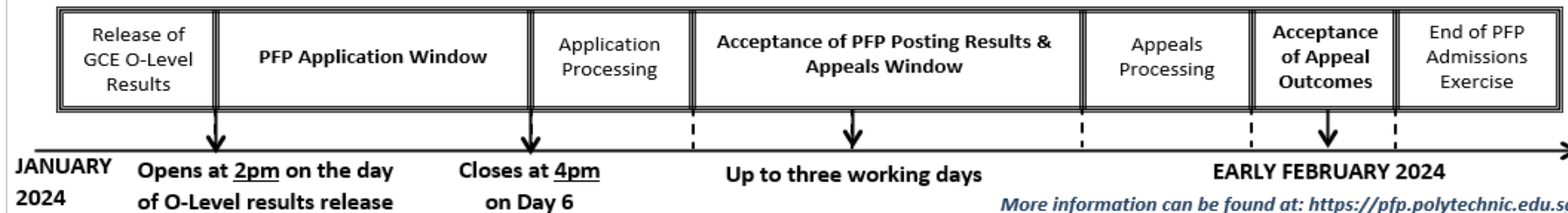
- Upon release of the GCE O-Level results, all PFP-eligible students will receive Form P containing a PFP PIN that allows them to apply for the PFP at this [link](#).
- You may select up to five course choices.
- Remember to provide updated contact details in your application to allow the polytechnics to contact you if necessary.  
(Note: You should continue to attend Sec 5 from 2 January 2024 while applying for PFP.)

### 4. How Will I be Informed of the Outcome?

- You should log in to the PFP portal to check your application outcomes on the day of PFP posting results release.
- You will then have to indicate if you wish to accept/reject/appeal the offer.
- If you do not select any option, your offer will become invalid and you will be required to continue with your classes in Sec 5/DPP.  
(Note: If your appeal is successful, your original offer will be voided, regardless of whether you accept the new PFP offer.)

### 5. What Happens Next?

- If you accept your offer, you will receive an enrolment package from the polytechnics in February/March 2024.
- The PFP year will start in April 2024.



# Kick start your journey with your ECG Counsellor



Mr Kenny, ECG Counsellor

- Book an appointment:  
<https://go.gov.sg/bookmrkenny>
- Dates: Mondays and Tuesdays
- Venue: Library



<https://go.gov.sg/bookmrkenny>

All the Best

**LABOR OMNIA VINCIT -  
LABOUR CONQUERS ALL**